

LCE

LED &
COMPONENTS
EXPERT

LED NEON FLEX SPECIFICATION

IP67 NEON 0606 24V TOP VIEW



IP67 NEON 0606 24V TOP VIEW

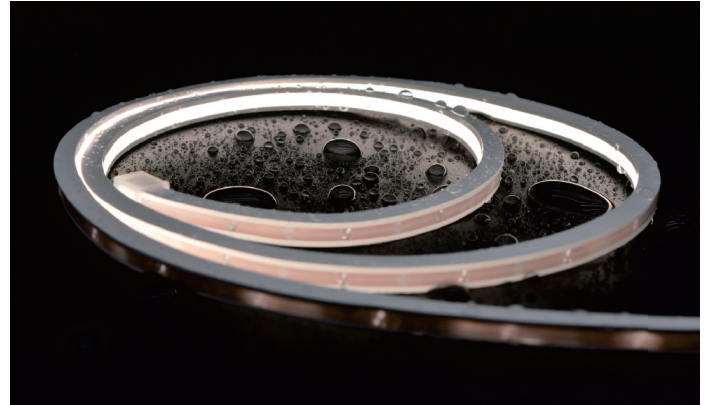
LCE LED & COMPONENTS EXPERT

Regular power 6W/m

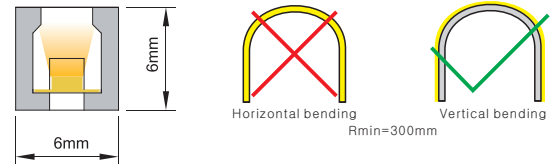
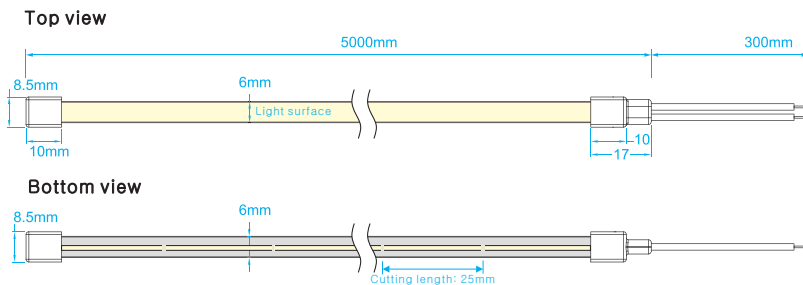
Max length 5 meters with one end power

Nine CCT optional from 1700K to 5600K

1700K 2200K 2400K 2600K 2800K 3200K 3800K 4400K 5600K



Dimensions & Waterproof



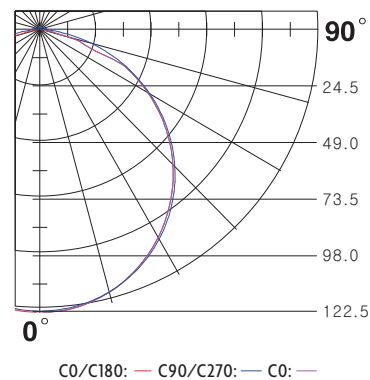
Product specification

Voltage	DC24 V
CRI/Ra	>90
Ambient temperature	-25°C~45°C

T0606

Power(W/m)	6
Efficacy(lm/W)@3000K	58
Max Length(m)	5

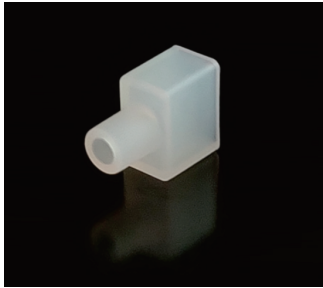
Polar curve (The data base on 6W 3200K)



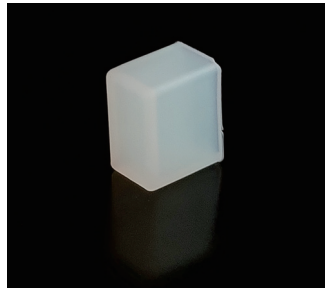
White color parameters

Part Number	CCT (K)	Efficacy (lm/w)	Lumen (lm/m)
▶ LCE-T0606-W17	1700K ⁺²⁰⁰ / ₋₁₀₀	39.2	235
▶ LCE-T0606-W22	2200K ⁺²⁰⁰ / ₋₁₀₀	54.2	325
▶ LCE-T0606-W24	2400K ⁺²⁰⁰ / ₋₂₀₀	55.0	330
▶ LCE-T0606-W26	2600K ⁺²⁰⁰ / ₋₂₀₀	56.2	337
▶ LCE-T0606-W28	2800K ⁺²⁰⁰ / ₋₂₀₀	57.5	345
▶ LCE-T0606-W32	3200K ⁺³⁰⁰ / ₋₂₀₀	58.0	348
▶ LCE-T0606-W38	3800K ⁺⁴⁰⁰ / ₋₃₀₀	59.7	358
▶ LCE-T0606-W44	4400K ⁺⁴⁰⁰ / ₋₄₀₀	58.8	353
▶ LCE-T0606-W56	5600K ⁺⁴⁰⁰ / ₋₃₀₀	63.2	379

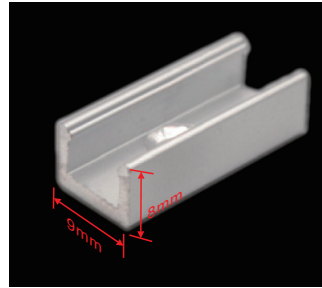
Accessory



Endcap connector with hole



Endcap without hole

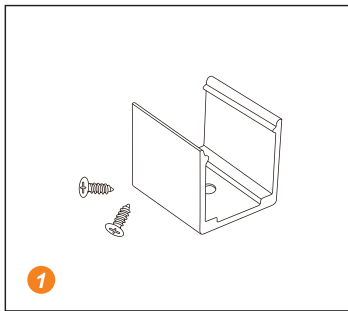


Mounting clip (length: 2cm)
Mounting channel (length: 1m, 2m, 3m)

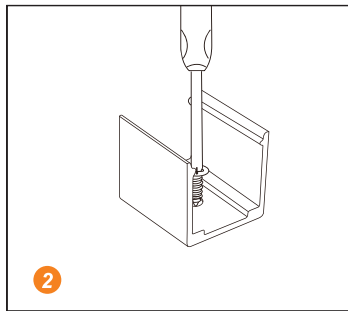


Scissors with angular scale

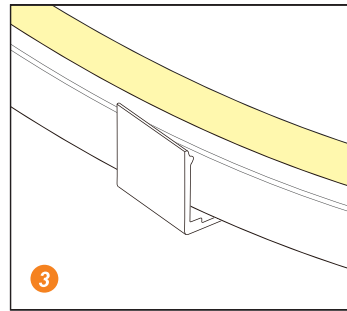
Installation



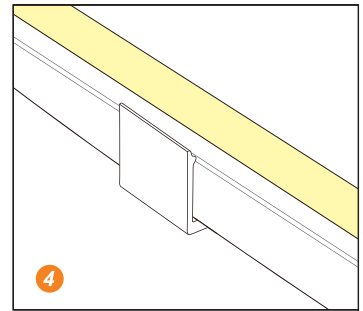
Prepare the screws and mounting clips



Adjust the fixed clips to the appropriate place, use a screwdriver to fix the screw.



Put the light emitting surface upwards, then insert the LED strip into the fixed clips.



Fix NEON strip completely into the fixed clip.